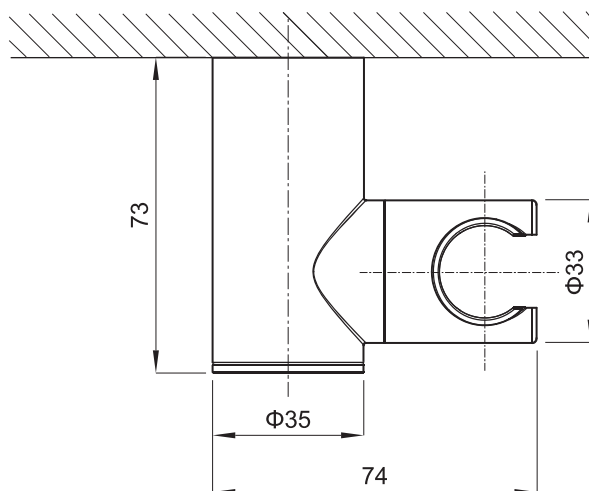


(Rough-in Dimensions):

(Unit): mm



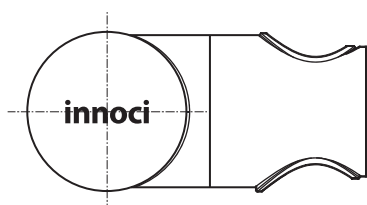
NP7303C



NP7303K



NP7303G



| | |
|-----------------------------------|-----------------------------|
| Item No. | NP7303C / NP7303K / NP7303G |
| Available Color | クローム / ブラック / ゴールド |
| Materials | Brass |
| Remarks : With install screw set. | |

C-202209030 K-201908001 G-201912025rev2

